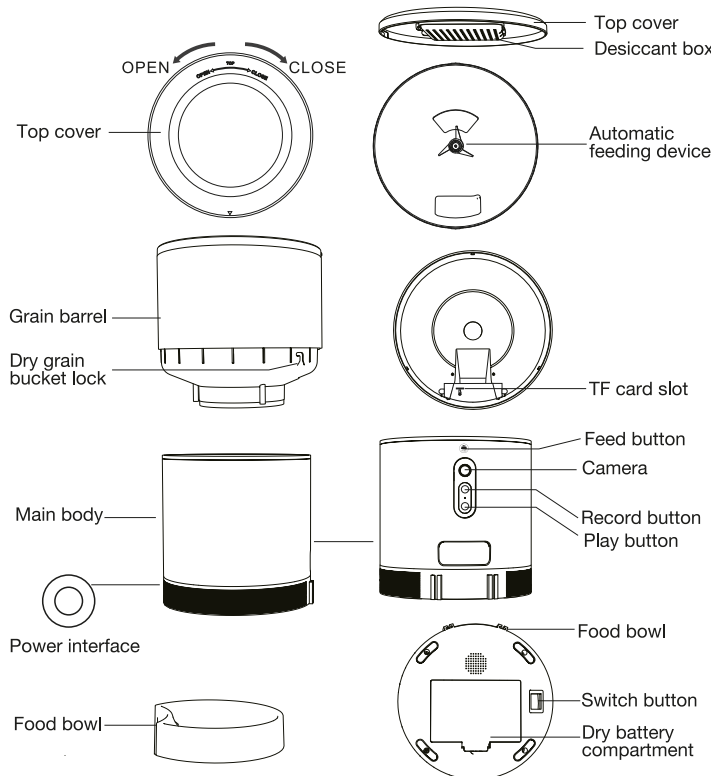


PAWZZ Automatic Pet Feeder  
User's manual  
Model: PA\_CPF4L



Please read the instruction manual carefully before using the product and keep it properly for future reference.

## Product overview



Note: you can optionally install 3 LR20 1.5V batteries in the battery compartment. This will allow your device to continue to operate in the event of a power outage. Please note that this device does not allow batteries to be recharged.

Note 2 : you can install a micro SD card in the SD card slot, it will save the video of your animal when he comes in front of the feeder if the motion detection is activated. The maximum size of micro SD card supported is 256gb.

## Safety instructions

The rated voltage of this product is 5V, please use the USB power adapter delivered with the product or make sure that the output voltage of your own USB power adapter is 5V.

- Use this product in an indoor environment, away from high heat sources.
- Pets that bite the electrical wires may cause electric leakage. Please guide them properly.
- Do not place the product in a high place to avoid damage to the product or safety issues for pets caused by the product falling.
- Please place the device correctly, prevent the pet from tipping over the device.
- This device is only suitable for small and medium pets under 20kg.
- This device is not recommended for young pets within three months.
- Please replace the desiccant in the storage lid regularly. No desiccant is needed.
- Please keep the food bucket dry and sealed, and check regularly to ensure there are no food residue in the bucket.
- Do not put all substances other than pet dry food into the grain bin. Otherwise, the device may be used abnormally or even cause pet safety problems.
- To prevent the pet from falling over the product, it is recommended to place it in a corner or against the wall.
- The power cable of the product should be installed as concealed as possible to prevent the equipment from being damaged by the pet biting the wire.
- If children are using this device, be sure to use it under adult guidance.
- Regularly clean the food bucket and food bowl.

## Operation guide

### 1. The first use

1. Open the top cover of the feeder and remove the power cord adapter from the bucket.
2. Plug the power cord into the power connector on the rear of the main unit and connect the adapter to power.
3. Place the main unit in a horizontal position and make sure that the food bowl is installed at the corresponding position of the main unit.
4. Add pet dry food to the feeder bucket. The diameter of the food units should be between 2 and 10 mm.
5. The desiccant is placed in the desiccant box by default. Please replace it regularly for long-term use (do not use cleaning)
6. The battery compartment can be 3 x LR20 1.5V dry batteries for manual feeding when there is no electricity (optional).
7. Bind the feeder to the Smart Life app to set up the planning of the feeding and access to other features.

### 2. Function of the buttons

**Feed button:** Short press to serve one portion, long press for 5 seconds to restore the factory settings.

**Record button:** Press and hold the "Record button" to record the sound to remind the pet to eat before feeding.

**Play button:** Plays the recorded sound.

**Power switch:** Turn ON/OFF feeder.

### 3. Bind the pet feeder to Smart Life APP

#### 3.1. APP download and installation

Scan the QR code below to download the Smart Life app on your smartphone and complete the installation.

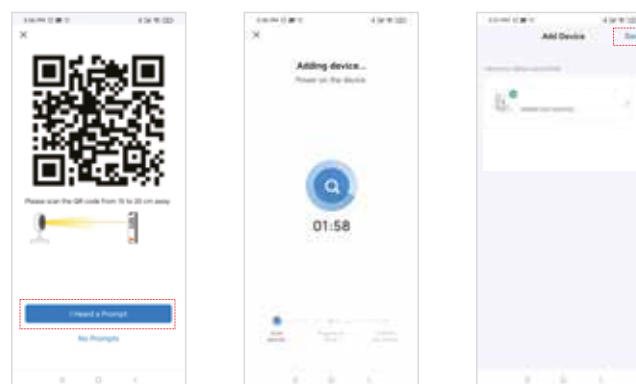
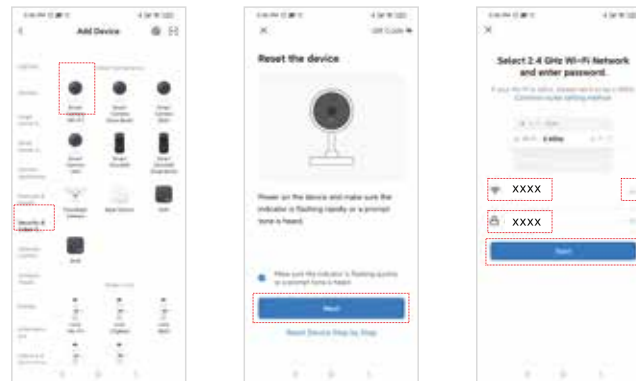


#### 3.2. Register the APP

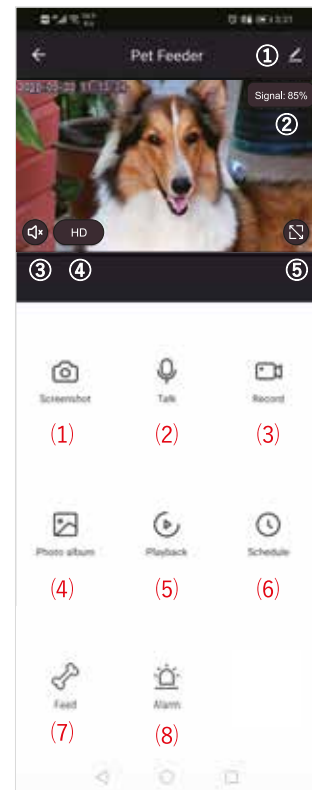
Open the installed smart life App and follow the prompts to complete the registration.

#### 3.3. Connect the product with Smart Life app

1. Switch on the product and open Smart Life application on your smartphone.
2. Smart Life will make a search of the available new products in the area and it should found the smart pet feeder.
3. Select the smart pet feeder found by the application and confirm to continue the configuration.
4. The application will ask you to confirm your WiFi name and password. Please note that this product is working on 2.4Ghz Wifi networks only.
5. Follow the steps on the screen to finalise the installation.
6. If the product is not automatically detected by the application, you can also add a product manually. In this case, select «add a device» then choose the category «Camera and security» then select «Wifi security camera». Then follow the steps on the screen. See some screen shots on the next page.



### 4. Smart feeder APP interface introduction



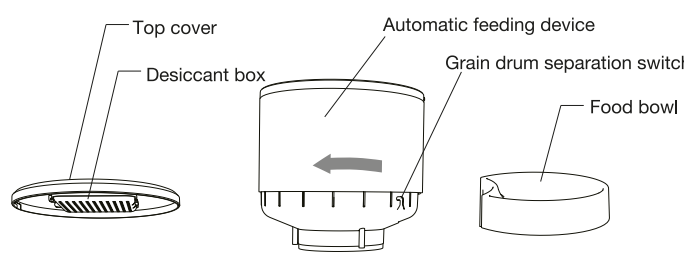
#### Monitoring screen introduction

- ① Settings: access to more settings for your device, like change the name, etc.
- ② Signal quality: Wifi signal of your device. Please make sure to have a sufficient signal for normal operation.
- ③ Speaker : real time monitoring, you can hear the sounds recorded by the microphone of the feeder.
- ④ SD/HD : switch from standard to high definition.
- ⑤ Select full screen or standard screen.

- (1) Screenshot: take a picture from the video.
- (2) Talk: 2 way intercom, speak to your animal.
- (3) Record: record a video and save it on your mobile phone.
- (4) Photo album: to view the pictures taken by the camera.
- (5) Playback: to see videos stored on the SD card of the product (if any).
- (6) Schedule: you can here program the feeding at selected time.
- (7) Feed: click for manual feeding
- (8) Alarm: set the motion detection ON or OFF. If activated, you will receive notifications when your animal is close to the camera of the feeder.

## Cleaning and maintenance

After a certain period of use, the bowl and the kibble reservoir must be cleaned with a cleaning product to prevent the appearance of bacteria that can affect the health of the animal.



1. The upper parts of the machine can be removed from the main charger and cleaned with detergent and water.
2. Open the desiccant bag box in the upper cover.
3. The kibble tank is disassembled by rotating the locking latch.
4. Pull up to remove the food bowl.
5. After cleaning, the parts must be dried before being assembled on the main unit for use.

▲ This feeder is suitable for dry foods smaller than 10 mm. Freeze-dried food is not compatible. Please keep the environment dry.

## Frequently asked questions (FAQ)

Q: The feeder is not connected, what is the problem, what to do?

A1: Check if the machine is normal: Check the status of the device indicator. After the power is turned on, the blue indicator light flashes. When the network is connected, it will be on. There will be a drop tone before the network is configured.

A2: Check if the Wi-Fi username and password are correct: Wi-Fi username and password cannot have special characters. It is recommended to use English letters + number signs.

A3: Uninstall the software and reinstall the software. Please authorize the APP to obtain the location information and access the network permissions during the installation process. Follow the above steps, and enter the correct wifi password. If you still have difficulties, please contact the customer service.

Q: When connecting the feeder, sometimes it can be connected normally, sometimes not, how to deal with it?

A: Check if the machine's food outlet is blocked. At this time, the blue indicator is always on.

Q: Why does the feeding time differ by tens of seconds from the current time?

A: The parameters set on the APP will have an error of about 30 seconds depending on the timing of the network environment.

Q: How to quickly reconnect after the machine is disconnected?

A1: Exit the APP and re-enter, wait for the data update.

A2: Switches from the feeding interface to the video interface and waits for the video to refresh.

Q: What's the feeder requirements for network type?

A: The feeder must use a wifi signal that satisfies the wifi 802.11b/g/n protocol.

## Product specifications

Plan feeding times and portion sizes remotely

Wide-angle 1080p HD camera with night vision and motion detection

Micro SD card slot for saving the recorded videos

Two-way microphone and speaker

Manage the dispenser by the Smart Life application on smartphone

Notifications in case of low kibble level, low battery level, etc.

Large capacity of 4 liters - Kibble size 2 - 10mm

Quantity per portion: 10g - Up to 10 servings per meal

Powered by USB cable (adapter and cable included)

Power supply possible by batteries (3xLR20 1.5V not included)

Compatible with Amazon Alexa and Google voice assistants

Product size: 31 x 19 x 32.50 cm

Wireless frequency : 2400 to 2483,5MHz - Max EIRP: 13.52 dBm

Package contents: kibble dispenser, power cord, USB adapter, desiccant bag, instructions for use.

## Disposal of electrical & electronic equipment



This symbol on the product or on its packaging indicates that this product shall not be treated as household waste. Instead it should be taken to an applicable collection point for the recycling of electrical and electronic equipment. For more information please contact your local council or waste disposal service.

## About this manual

We strive to ensure that the information contained in this manual are as accurate as possible. Changes may be made to the manual or the product without prior notice. The latest updates will be available on our website [www.pawzz.eu](http://www.pawzz.eu).

Our company shall under no circumstances be held liable for injury or damage caused by errors or omissions in this manual.

©Pawzz 2025. All rights reserved. All brands and trademarks mentioned in this manual are the property of their respective owners.

For questions about this product, please email us at [info@6europe.com](mailto:info@6europe.com).

## EU Declaration Of Conformity

We, A6 Europe s.a., established 127-129 rue Colonel Bourg, 1140 Brussels, Belgium

Declare under our own responsibility that the following equipment :

Brand : Pawzz

Item code : PA\_CP4L

Product description : Automatic pet feeder

Complies to the essential provisions of the following EC Directive(s):

RED Directive: 2014/53/EU

LVD Directive : 2014/35/EU

EMC directive : 2014/30/EU

RoHS Directive : 2011/65/EU, amendment 2015/863/EU

EU Directive 2009/125/EC, regulation (EU) 2019/1782

and respects the essential requirements of harmonized European standards:

ETSI EN 301 489-1 V2.2.3: 2019-11

EN 55032 :2015+A11 :2020

EN IEC 61000-3-3 :2013+A2 :2021

EN 55035 :2017+A11:2020

Radio : ETSI EN 300 328 V2.2.2: 2019-07

Safety: EN IEC 62368-1:202+A11:2020

Health: EN IEC 62311:2020

Date : February 2025

David Peroo, Product Manager